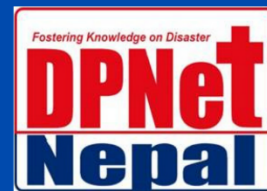


JAJARKOT EARTHQUAKE

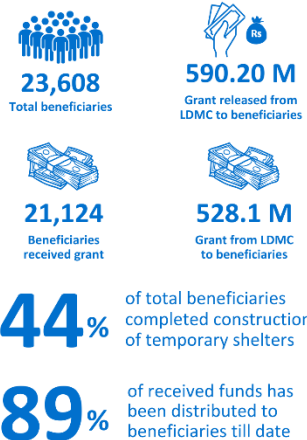
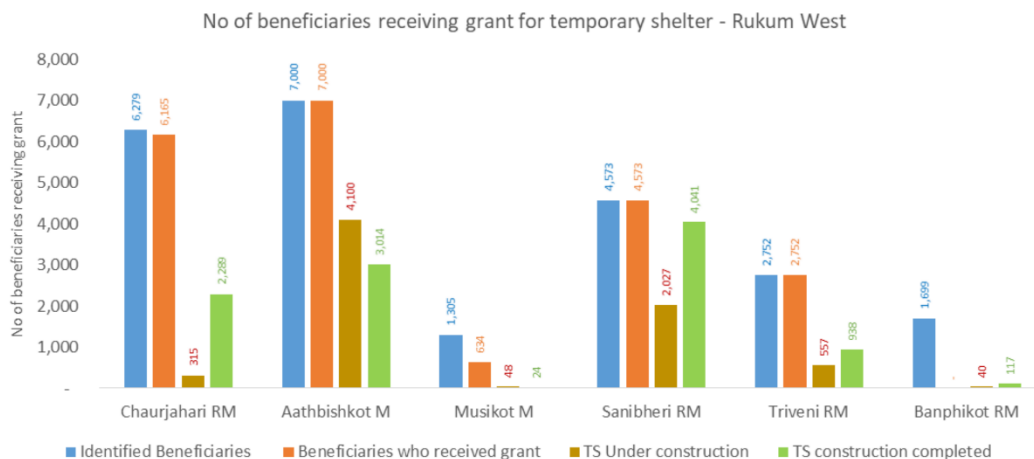
Quad-Day Situation Analysis Report

(2-5 January 2024)

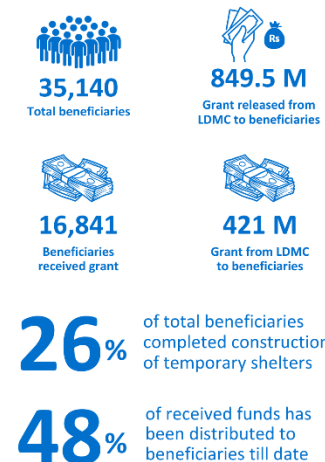
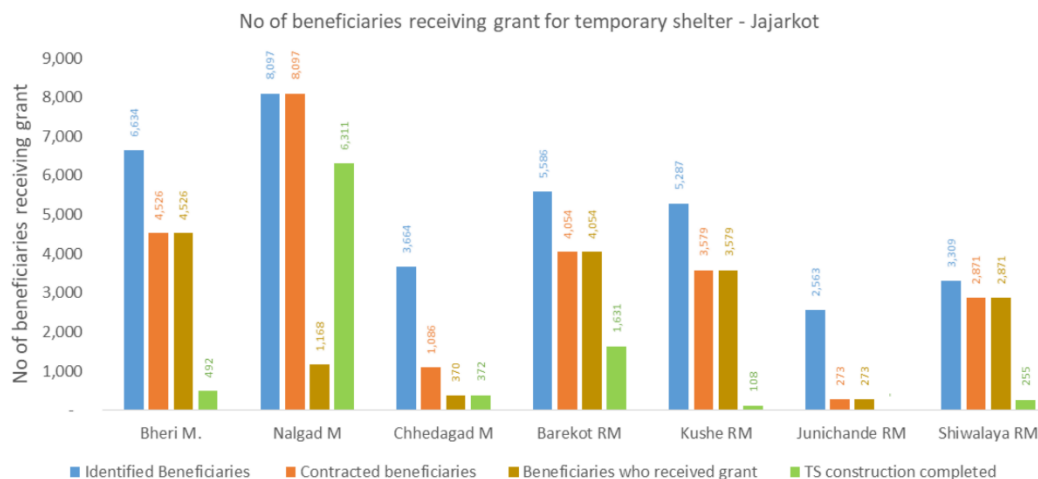
Editor: Dr. Raju Thapa, DPNet



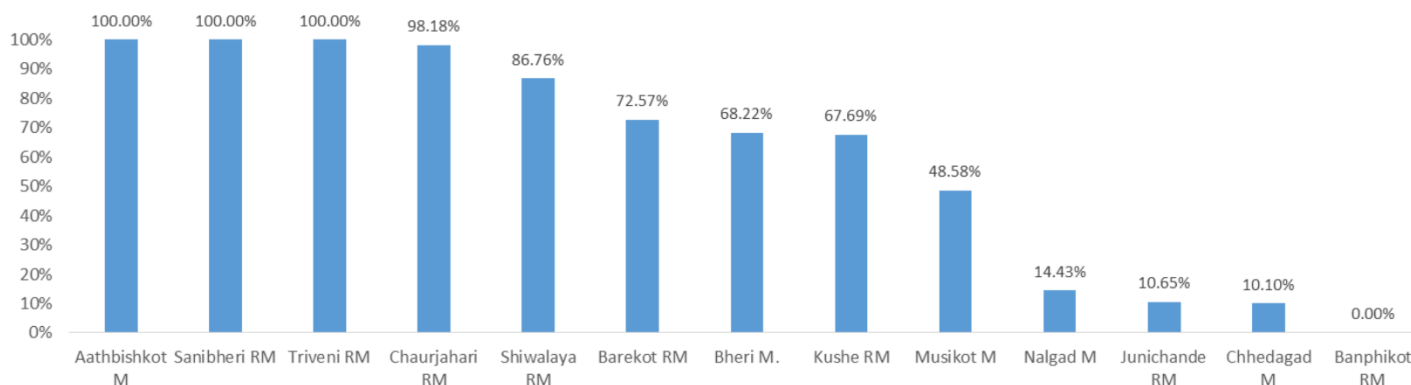
Rukum West



Jajarkot



Percentage of HH receiving grant for construction of temporary shelter



Summary

This report emphasizes the challenges facing earthquake-affected populations in earthquake affected districts Jajarkot and Rukum West. A key issue is the discrepancy in shelter fund disbursement, where beneficiaries struggled to withdraw government-allocated funds for temporary shelters. This was primarily due to some banks' refusal to use existing social security accounts for these transactions, forcing many to open new accounts and causing delays in grant distribution. Although Nepal Bank Limited has begun depositing funds into existing social security accounts, other banks have not followed suit, leading to confusion and frustration among the beneficiaries.

In addition to financial challenges, the report addresses the disruption of education caused by the earthquake. Many school buildings were damaged, necessitating the establishment of temporary learning centers (TLCs). While significant progress has been made in constructing these TLCs, there are still challenges in completing them, impacting the resumption of regular schooling. The psychological impact on students is also notable, with many exhibiting signs of trauma and disinterest in attending classes, necessitating the intervention of psychosocial counselors.

Government efforts in reconstruction have also been a focus, with discussions on enhancing the capabilities of the NDRRMA through legislative amendments. The aim is to streamline processes and expedite relief and reconstruction efforts. However, bureaucratic delays and insufficient fund allocation have hindered these efforts.

The report further highlights the health concerns arising from the cold weather, with an increase in cold-related illnesses like pneumonia, diarrhea, and asthma among the earthquake survivors, who are largely residing in inadequate makeshift shelters. Lastly, the report shares a personal story of a widow struggling to cope with the loss of her husband and son in the earthquake. Despite the trauma and challenges, she remains determined to rebuild her life and provide for her daughter, highlighting the resilience and ongoing struggles of the earthquake victims.

Discrepancies among banks in using social security accounts for shelter fund disbursement

Some beneficiaries faced hurdles when attempting to withdraw funds allocated for temporary shelter from the government. Some eligible beneficiaries for temporary shelter funds encountered obstacles in withdrawing allocated funds while trying to use their existing social security accounts, only to face rejection by banks citing these accounts' limitations for different purposes. As a result, earthquake-affected individuals had to open new bank accounts, causing delays in grant distribution. Local residents were frustrated, highlighting the added time and inconvenience this extra step brought about.



A recent development has been observed as Nepal Bank Limited has commenced depositing funds, received from the municipality, into the existing social security accounts of beneficiaries since Wednesday. Rajesh Gurung, Assistant Bank Manager at the Khalanga Branch of Nepal Bank Limited, mentioned that they initiated these deposits upon receiving approval from the head office for such transactions related to temporary shelter construction funds. Meanwhile, all private and government banks in the district, except Nepal Bank Limited, have been requiring beneficiaries to open new accounts. This discrepancy among the banks has left beneficiaries astonished, with one bank allowing the use of existing social security accounts while others refuse to do so. Simultaneously, bank officials are urging the government to issue a circular clarifying the matter, aiming to resolve such discrepancies.

Status of education and learning center established across Jajarkot district

The earthquake with its epicenter at Ramidanda in Jajarkot, caused significant damage to both human lives and physical structures. Among the impacted structures were school buildings, severely disrupting educational facilities. Consequently, efforts to establish temporary learning centers have been underway, supported by various organizations in collaboration with the government, aiming to restore educational continuity post the quake's impact.



Yageshwar Khatri, the Information Officer at the Social Development Office in Jajarkot, revealed that out of the required 447 TLCs (both Type I & II), a total of 310 have been set up across the district, while 137 are currently under construction. The earthquake caused damage to 341 school buildings, with 289 of them being fully damaged. Consequently, 1,599 classrooms, 103 toilets, and over 75,000 students were affected in Jajarkot District.

So far as 45 TLCs have been constructed in Chhedagad Municipality, 35 in Bheri Municipality, 54 in Nalgad municipality, 143 in Barekot RM, 22 in Kushe RM, 10 in Junichande RM and 1 in Shivalaya RM respectively. While teaching has commenced in most municipal schools, many affected schools are yet to complete the construction of the TLCs. Some are still under construction, while others are in the transportation phase for construction materials. The education unit at the Social Development Office, Jajarkot, is actively monitoring the ground situation and collaborating with municipalities to expedite the remaining TLC constructions. Their primary aim is to quickly accomplish

Municipality	Required TLCs	Completed TLCs	Remaining TLCs
Chhedagad Municipality	45	45	0
Bheri Municipality	51	35	16
Nalgad Municipality	54	54	0
Barekot RM	143	143	0
Kushe RM	97	22	75
Junichande RM	11	10	1
Shivalaya RM	46	1	45
Total	447	310	137

these constructions to facilitate a smoother return to regular schooling for the affected students. At the same time, In the post-earthquake scenario, notable challenges can be observed in the academic landscape. Many students either remain absent or display disinterest, often skipping classes or leaving during recess. Their reluctance seems to be coming from lasting fears related to their earthquake experiences. To address these concerns, school authorities intermittently invite psychosocial counselors from hospitals. Sweta Adhikari, a psychosocial counselor from CMC Nepal shared that at Tribhuvan Secondary School, Bheri Municipality, some students in higher grades have begun exhibiting convulsive disorders, prompting the request for counselor intervention. Periodically, teams of counselors visit schools to screen students for any emerging issues and provide necessary support upon identification.

Earthquake affected are still in the tent amid chilling cold in Rukum West

Two months after the earthquake that hit Jajarkot, many quake affected remain sheltered in tents.

The disaster claimed the lives of 53 people in Rukum West, leaving 23,608 families homeless. Efforts for search, rescue, treatment, and relief distribution post-earthquake have been effective, but a delay in constructing temporary shelter has sparked complaints from affected people living months in tents. The local government's concentration remains on temporary shelter



construction, yet they could complete only 10,423 shelters in Rukum West using government grants. The remaining affected and identified beneficiaries still reside in tents or damaged houses.

Banphikot RM, with 1,699 beneficiaries, has still not been able to disburse funds to the identified beneficiaries owing to the new chief administrative officer not joining the office for long. However, the affected people have independently built 117 temporary shelters, with an additional 40 currently under construction.

Prem Bahadur Pun, the ward chairperson of Aathbiskot-11, pointed out the challenges faced by families living in tents, as some are forced to return to damaged homes because the tents can't handle the cold. Affected people eagerly anticipate the construction of temporary shelter and the reconstruction of their old homes. Affected people especially, lactating mothers, children, and elderly people as well as people with disability, are expressing their concerns about health issues affecting families in tents, particularly intensified by the winter cold displaying discomfort and asthma. He said that even the municipality is trying its best to expedite shelter construction, yet owing to different challenges, for instance, a single bank in the municipality is facing difficulties in disbursing funds to the large volume of beneficiaries, the efforts are not up to the mark.

The district administration office reported that altogether 23,608 beneficiaries have been identified in the district having 10,423 (44.1%) temporary shelter completed, with 7,087 more underway. The district received Rs. 840 million from the federal government for temporary shelter, with Rs. 590 million has already been sent as the first installment to the municipalities. Fund disbursement to the beneficiaries reached Rs. 52.8 million, benefiting 21,125 families with an initial installment of Rs. 25,000 each.

Government initiatives and challenges in earthquake reconstruction

Interaction program was organized jointly by the province and local level governments of Karnali and Sudurpaschim provinces in Kathmandu to discuss on the reconstruction models for



earthquake-hit districts, including Jajarkot, Rukum West, Salyan, and others struck by the earthquake. During the program, Prime Minister Pushpa Kamal Dahal shared a plan to assign the NDRRMA to oversee the reconstruction of private and government infrastructure in the affected areas.

During the interaction, the prime minister emphasized strengthening NDRRMA's capabilities through legislative amendments and structural changes, aiming to expedite reconstruction efforts. He expressed concern over bureaucratic delays hindering the distribution of relief funds and stressed the urgent need to reorganize the processes to promptly assist disaster affected people. Moreover, he stressed for tailored reconstruction models aligned with cultural and social aspects.

Anil Pokhrel, CEO of NDRRMA, revealed challenges in fund allocation, citing the release of only Rs. 2 billion out of the Rs. 10 billion allocated for temporary shelters. He highlighted bureaucratic hurdles that affected earthquake affected peoples' access to relief funds and reconstruction support. Different experts presented in the program stressed the importance of empowering NDRRMA and advocated for restructuring government divisions to enhance its autonomy as well as the urgency for comprehensive reconstruction plans beyond temporary shelters, emphasizing unmet needs for essential infrastructure like sanitation facilities, roofing, safe drinking water, and livestock sheds. The event was organized to strategize a robust reconstruction agenda, featuring presentations by municipal authorities and Chief District Officers to address the earthquake affected people scenario in their respective districts.

Meanwhile, the spokesperson at the Office of the Prime Minister and Council of Ministers, disclosed that the Prime Minister's Disaster Relief Fund set up for Jajarkot earthquake affected people has collected Rs 279.89 million.

Cold-related illnesses increased among earthquake affected population

The rising cold in earthquake-affected areas is giving rise to various health-related concerns, with noticeable impacts becoming apparent. Due to the cold weather, respiratory illnesses such as pneumonia, diarrhea, and asthma have seen a rise throughout the district, particularly in Nalgad,

Barekot, Junichande, Chhedagad, Shiwalaya, and Kushe municipalities. Tapta Chanara, health assistant at Nalgadh's health branch, observed a rise in patients with cold-related problems caused by the prolonged stay in the makeshift tarpaulin shelters. In Nalgadh alone, over a hundred patients seek treatment daily at health facilities due to cold-related ailments, indicating a concerning escalation in the severity of the weather conditions.

Manu BK from Nalgadh Municipality shared her difficulties caused by the cold weather, highlighting problems such as headaches, diarrhea, and the common cold. She mentioned waking up with a swollen face in the mornings due to dew inside the tarpaulin tent, expressing ongoing discomfort despite surviving the earthquake. Almost forty houses of inner settlements are experiencing a widespread health impact, affecting both children and the elderly. According to the local people, small children are suffering from pneumonia and cold and fever have become common as many people in the village are sick.



Health assistant Chanara reported an increase in cold-related patients in various villages within Nalgadh, such as Chiuri, Karuwa, Dandagaon, and others.

The district has witnessed a surge in cold-related illnesses, particularly in Nalgadh, where the patient inflow surpasses other areas. Approximately 400 patients across the district seek treatment for cold-related issues at health post daily. According to district Hospital Jajarkot, while the situation hasn't officially been declared a disaster, there's a concerning rise in illnesses such as diarrhea, pneumonia, asthma, and common colds among those affected by the earthquake. Efforts are focused on proactively preparing and arranging resources to address the issue.

A widow's struggle for ensuring her daughter's future after the earthquake

After the earthquake, misfortune struck the Oli family when Purna Prakash Oli and his young son were trapped in their home, along with his wife and 1-year-old daughter. Despite the efforts, Purna Prakash and his son couldn't be saved. The house was completely destroyed and no longer habitable.

Maya Gharti, Purna Prakash's widow, now lives in a makeshift tarpaulin tent with her newly born daughter. The absence of her husband was keenly felt when her young daughter fell ill for two weeks. "I worry immensely when my daughter is unwell, and I miss him terribly," she expressed.

Despite her immense loss, she remains resolute to survive for the sake of her daughter. "I've lost my husband and son, but I'll continue and fight for my daughter," she emphasized.



She requested the urgent need for financial and other assistance to support her daughter's upbringing, education, and the reconstruction of their home alongside restoring their small photography shop, their primary livelihood. Despite receiving some monetary assistance from some charitable organizations, deposited under her daughter's name in a bank, the challenges she faces are immense. She finds herself crossing this overwhelming

situation alone, relying solely on the support of neighbors.

Her determination is clear, yet there are some worries about the huge task ahead rebuilding their shelter, caring for her child, reviving the shop, repaying debts, and securing their sustenance. "It feels like a tough fight for a woman like me, but I'm determined to overcome these challenges and secure our future," she shared.

This Quad-Day Situation Analysis Report is prepared by DPNet in support of
Plan International

